



## SPECIALISTS IN LIGHTING CONTROL GEAR

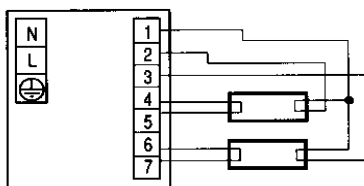
We provide...

- **A cost saving alternative to replacing light fittings** - By replacing the control gear within the fittings (ballasts, emergency modules and batteries) we reduce costs and waste.
- **Replacements for obsolete lighting parts** –We have a huge database of lighting parts which are no longer manufactured. We find the best fit new replacements which can be easily installed.
- **Next day delivery** – on many lines. We keep a core range of the most popular products in stock so that we can despatch to site.
- **After Sales Technical Advice** – Engineers can phone Geoff, our Technical Director for free technical advice over the phone. Geoff has a BSc in Electrical Engineering and was involved in the design and development of electronic equipment for Thorn Lighting before he founded GP Electronics.
- **Wiring instructions** – Maintenance engineers find our wiring instructions invaluable in this specialist subject. We provide detailed diagrams and wiring instructions and solutions to many problems faced by electrical installers.

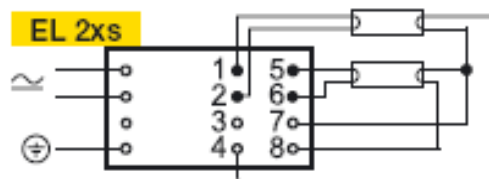
For example...

### Use of Helvar EL2x58s in place of Magnetek BBT-258 WS

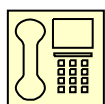
Magnetek BBT-258 WS



EL2x58s



The wire that used to go to pin 1 of the BBT-258 must be connected to pin 7 of the EL2x58s  
 The wire that used to go to pin 2 of the BBT-258 must be connected to pin 4 of the EL2x58s  
 The wire that used to go to pin 3 of the BBT-258 must be connected to pin 8 of the EL2x58s  
 The wire that used to go to pin 4 of the BBT-258 must be connected to pin 1 of the EL2x58s  
 The wire that used to go to pin 5 of the BBT-258 must be connected to pin 2 of the EL2x58s  
 The wire that used to go to pin 6 of the BBT-258 must be connected to pin 5 of the EL2x58s  
 The wire that used to go to pin 7 of the BBT-258 must be connected to pin 6 of the EL2x58s



**SALES 01765 607444 or email [gp@gpel.co.uk](mailto:gp@gpel.co.uk)**  
**Or look us up: [www.gpel.co.uk](http://www.gpel.co.uk)**