

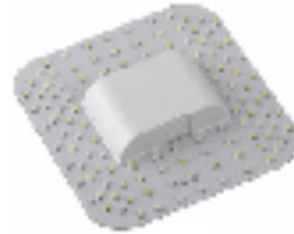


LED | Fluorescent | Emergency | Halogen  
 Technical diagrams | After-sales assistance

## WE NOW SELL LED GEAR & FITTINGS

### LED 28W 2D equivalent Lamp – basic

- **Plugs directly into old 2D lampholder**
- 12W: 160 x 3528 SMD (Surface mounted Diodes)
- Colour Temperature: 6500K
- Lumens: 940lm
- Lifespan: 30,000 Hours (Approx.)



**£16**

### LED 28W 2D equivalent lamp – emergency ready

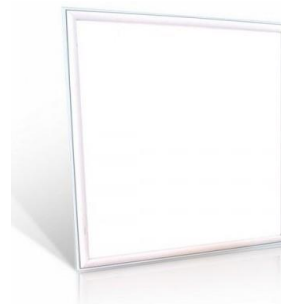
- **Plugs directly into old 2D lampholder**
- Emergency ready with KTC27EME-DD module
- Save energy up to 65% compared with a fluorescent DD lamp with magnetic ballast.
- For maximum energy savings, bypass all control gear and supply directly from the mains.
- Long life of 30,000hrs.



**£22**

### 600x600 30W LED ECO Panel

- Service life 40,000h
- Class III panel supplied with separate independent class II LED driver
- Compatible with the CEW030LIL58-130N emergency module
- Optional surface mounting kit available
- Total Lumens (lm) 2900



**£35**

### SINGLE OR DOUBLE LED BATTEN

- Service life 50,000h (LMF 0.8)
- IP20 1.2mm powder coated aluminium housing
- Opal polycarbonate diffuser
- -20 C to +40 C working temperature
- 5000K colour temperature (3000K, 4000K & 6000K options)
- Emergency version & DALI driver available
- Microwave presence sensor optional



### LED 3W EMERGENCY DOWNLIGHTER

- Pack includes 1 x 3W LED downlight c/w inverter and battery pack, 1 x silver trim, 1 x white trim, 1 x text record sheet
- 34mm cut out, 40mm diameter



\* Introductory Price

## LED EXIT SIGN

- Maintained as standard with 'dual circuit technology' enabling maintained or non-maintained operation
- Supplied with a down arrow legend as standard, left/right legends available as an optional extra.
- Brass, chrome or brushed chrome trims optional
- 110V also available



## LED BULKHEAD LUMINAIRE

- Maintained with 'dual circuit technology', enabling maintained or non-maintained operation
- Internal and external use, weatherproof IP65
- Lightweight polycarbonate construction
- 110V also available



## LED Circular Fitting 2D equivalent

- A range of modern tough round profile IP65 weatherproof LED luminaires with a white fire retardant base moulding and prismatic diffuser
- Emergency maintained or mains options
- Microwave presence sensor optional
- DALI driver optional



## HANGING LED EXIT SIGN

- IP20 Polycarbonate enclosure
- Supplied with a down arrow legend as standard, left/Right Legend Available
- Dual circuit design for maintained and non-maintained operation.
- An adjustable drop length
- 36 metre viewing distance



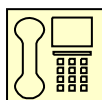
## LED TWIN SPOT FITTING

- Fully adjustable, multi-directional twin heads
- Polycarbonate enclosure - IP65
- Self Test as standard with 4 LED status indicators at the front of the fitting to assist in monitoring and to reduce maintenance costs



## SECURITY LED BATTEN

- Service life 50,000h (LMF 0.8)
- Polycarbonate enclosure - IP65, & anti-corrosive
- Polycarbonate diffuser, stainless steel securing clips
- -20 C to +40 C working temperature
- 5000K colour temperature (3000K/4000K/6000K)
- Emergency version & DALI driver available
- Microwave presence sensor optional



**SALES 01765 607444 or email [gp@gpel.co.uk](mailto:gp@gpel.co.uk)**

**[www.gpel.co.uk](http://www.gpel.co.uk)**